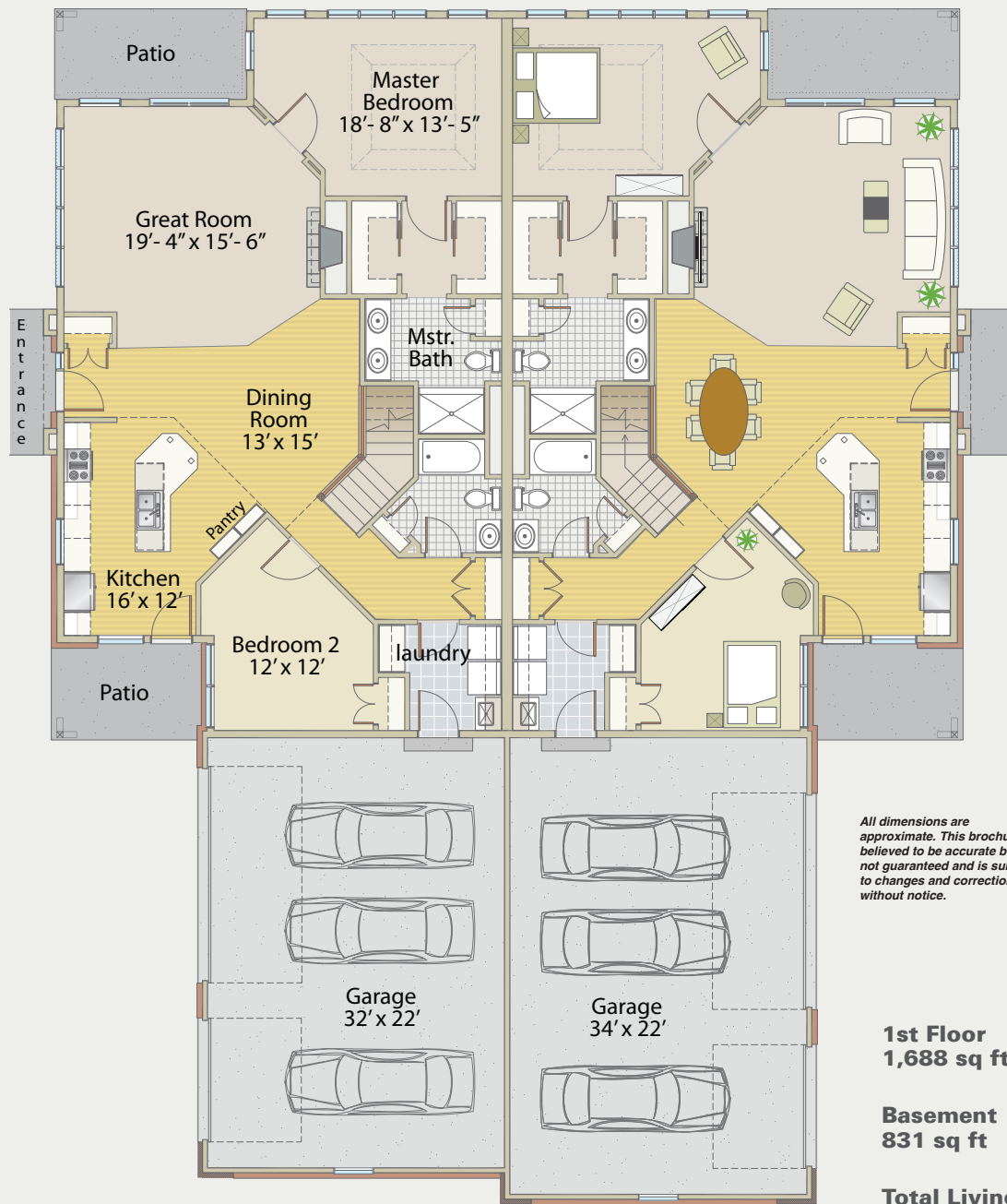


1st Floor



All dimensions are approximate. This brochure is believed to be accurate but is not guaranteed and is subject to changes and corrections without notice.

**1st Floor
1,688 sq ft**

**Basement
831 sq ft**

**Total Living
2,519 sq ft**

STANDARD CONDOMINIUM FEATURES

- 3 BEDROOMS AND 3 FULL BATHS
- OPEN CONCEPT FLOOR PLAN
- KITCHEN WITH ISLAND
- GRANITE COUNTER TOPS
- 10' CEILINGS
- CERAMIC TILE FLOORS
- FINISHED LOWER LEVEL
- WOOD FLOORS

see reverse for more features

LOCATED ON VILLA
DRIVE WEST OF 27TH
STREET AND SOUTH OF
DREXEL AVENUE.

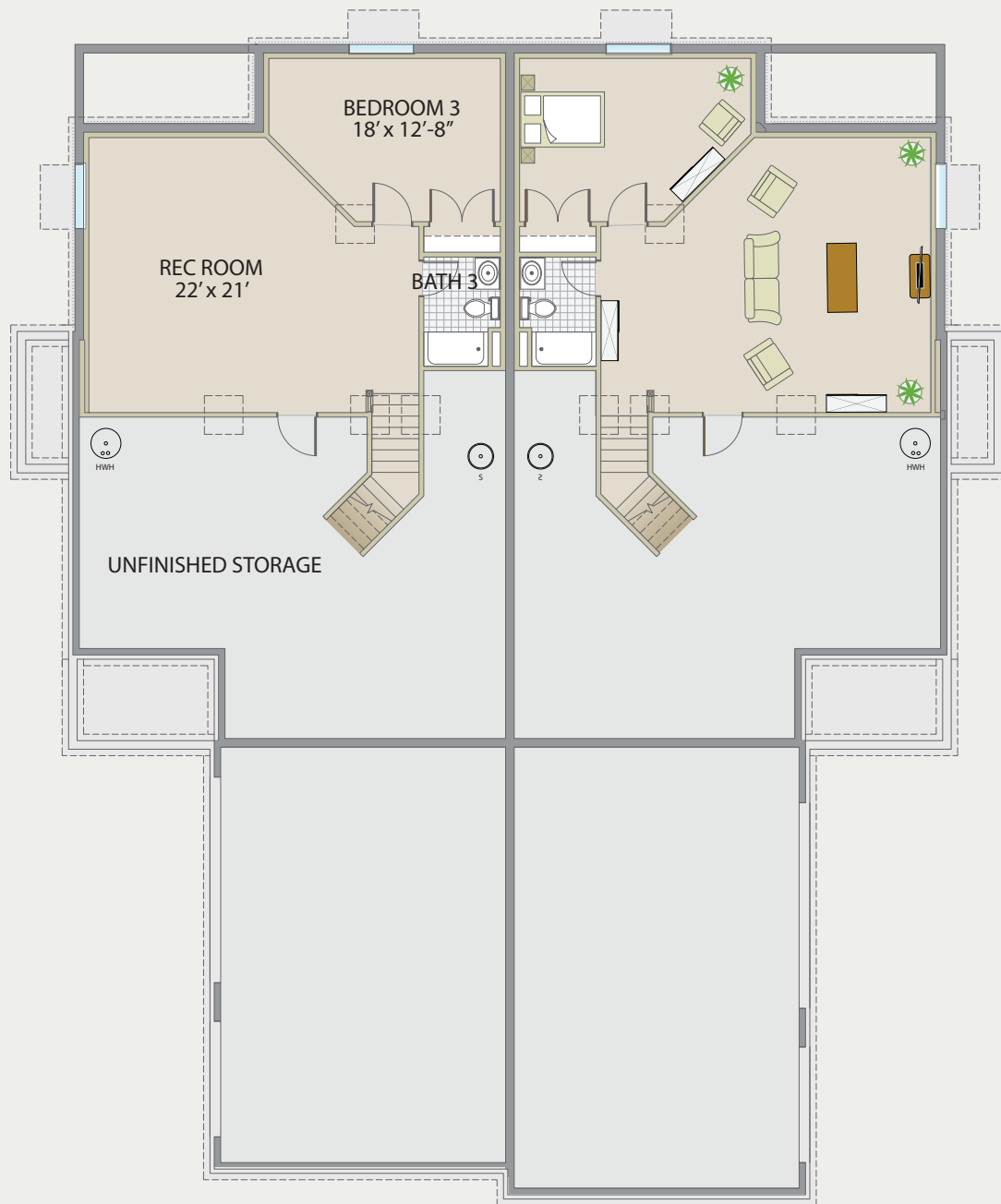
THE SPRUCE



FoundationsRealty.com
414-336-6957
mlgmonnat@gmail.com



Basement



STANDARD CONDOMINIUM FEATURES

- GREAT ROOM WITH FIREPLACE
- 1ST FLOOR LAUNDRY ROOM
- 3 CAR GARAGE
- CONCRETE PATIO
- BRICK EXTERIOR ACCENTS
- INCLUDES DRIVEWAY AND LANDSCAPING
- UNDERGROUND LAWN SPRINKLER

see reverse for more features

LOCATED ON VILLA
DRIVE WEST OF 27TH
STREET AND SOUTH OF
DREXEL AVENUE.

THE SPRUCE

THE
VILLAS of Franklin

FoundationsRealty.com
414-336-6957
mlgmonnat@gmail.com

